

Having trouble viewing this email? [Click here](#)



TREEmail

AN UPDATE FROM THE VERMONT URBAN AND COMMUNITY FORESTRY PROGRAM



EAB Takes Us Back to School

Anyone interested in the emerald ash borer (EAB), one of the most destructive exotic invasive species in the country today and now very close to Vermont's border, can learn more about this pest conveniently online.

The EAB University is a series of free webinars about EAB and its destructive history in detail. These webinars cover everything from EAB 101 to the latest research, preparations, regulations, pesticides, management strategies, wood utilization and restoration. In all, 10 Webinars are included in the series and are available for viewing anytime you have time.

Enroll in [EAB University](#) today, it's free!



Corridors and Commons

Submissions are now being accepted for the 2010 Corridors and Commons Awards Program. Showcase your work linking open spaces with corridors. [Learn more](#)



Thank You Arbor Day Sponsors

What do VELCO, Horsford's Nursery and CVPS have in common? They help schools celebrate Arbor Day, the only holiday that celebrates the future! [Learn more](#)

IN THIS ISSUE

[EAB University](#)

[Corridors and Commons](#)

[Arbor Day Sponsors](#)

[Feature Tree](#)

[Pest Highlights](#)

[2010 Arbor Day Poster](#)

[Tree Planting Grants](#)

SOUL TALK



Check out the latest [SOUL Tree Steward News](#).

CALENDAR

Arbor Day in Vermont is Friday, May 7th. What are you doing to celebrate trees?

ANR Lab Open House on July 14. Celebrating 20 years.

[Find events](#)

FUNDING

Municipal Planning Grants - Due April 30.

[Find out more](#)

QUICK LINKS

[About us](#)

[Library](#)

[Staff](#)

[Urban & Forestry](#)

[Council](#)

RESOURCES TO KNOW

[Urban Forestry on](#)



Feature Tree

Abies concolor- White fir

While not native to the east, it is a good choice for our area. Blue gray foliage much like Colorado blue spruce and highly adaptable.

[Learn more](#) *Connects UConn Plant Database*



Pest Highlights

Zeroing In On Disease Resistant Butternut Trees

Listen to an interview by VPR's Jane Lindholm with Dale Berghdal, an expert in butternut tree canker, about an effort to identify disease resistant butternuts. [Listen now](#)



Vermont's 2010 Arbor Day Poster

Congratulations to Hannah Earl, a fifth-grader at Fairfield Central School, who is the winner Vermont's 2010 Arbor Day poster contest. Join us at the State Arbor Day ceremony on 5/7 at 11 am on the Statehouse lawn with Governor Douglas to recognize Hannah and our four district poster contest winners. [Learn more](#)



Tree Planting Grants Awarded

Through a grant from the Preservation Trust of VT, 9 communities will be planting trees in their designated downtowns & villages this year. A special thank you to Bruce Lisman - life will be a shade better in these communities. [Learn More](#)

[You Tube?](#)

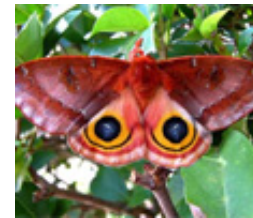
Need help in selling urban forestry in your community? Send a You Tube video on how community trees are a living investment.

COMMUNITY SPOTLIGHT

[Help Montpelier and Waitsfield win a fruit tree orchard](#)

You can [vote](#) once a day, each day, until the voting ends on August 31. Vote often! The Fruit Tree Foundation will announce a winner each month - May thru September.

The io Moth



The io moth
Has mam-moth eyes
That are not real-
They're a disguise
To ward off birds
And other creatures,
Like garter snakes
And science teachers.

~Douglas Florian

PLANT LIVE GROW

TREEmail is brought to you by the Vermont Urban and Community Forestry Program, an initiative of the Vermont Department of Forests, Parks and Recreation in partnership with the University of Vermont Extension. Visit our website, WWW.VTCOMMUNITYFORESTRY.ORG. TREEmail is made possible in part by the USDA Forest Service, State and Private Forestry.

You received this email because you subscribed to TREEmail, formerly The Town Green. You may unsubscribe or change your preferences at any time. The Vermont Urban and Community Forestry Program does not share, rent or sell private information to third parties.



[Forward email](#)



This email was sent to katherine.forrer@uvm.edu by vtcommunityforestry@state.vt.us | [Update Profile/Email Address](#) | Rapid removal with [SafeUnsubscribe™](#) | [Privacy Policy](#).

Vermont Urban & Community Forestry Program | 103 South Main Street | 10 South | Waterbury | VT | 05671