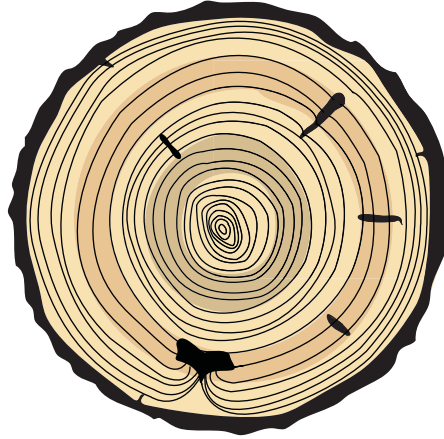


Tree Rings



You can study tree growth by looking at a tree slice like this one from a sugar maple. Every year that a tree grows, it grows one ring. Can you count the rings on this maple tree and tell how old it is? _____ years.

Notice how some rings are larger than others. Why do you think some rings are smaller and closer together?

What makes a tree grow slower or faster?

Circle the elongated holes—these are tap holes from the time when this tree was tapped for sap that was boiled down into maple syrup. How old was this tree when it was first tapped? _____ years

Circle a wound in the tree. What do you think caused this large wound?

If you were a tree, what would your rings look like? Draw a picture below of your own slice: