

# Growing and Planting Trees with Kids

## Nature Connection and Nature-Based Climate Action in Burlington

with Burlington Parks & Recreation and Burlington Wildways



BURLINGTON  
**PARKS  
RECREATION  
WATERFRONT**  
VERMONT







BURLINGTON  
PARKS  
RECREATION  
WATERFRONT  
VERMONT

+



+

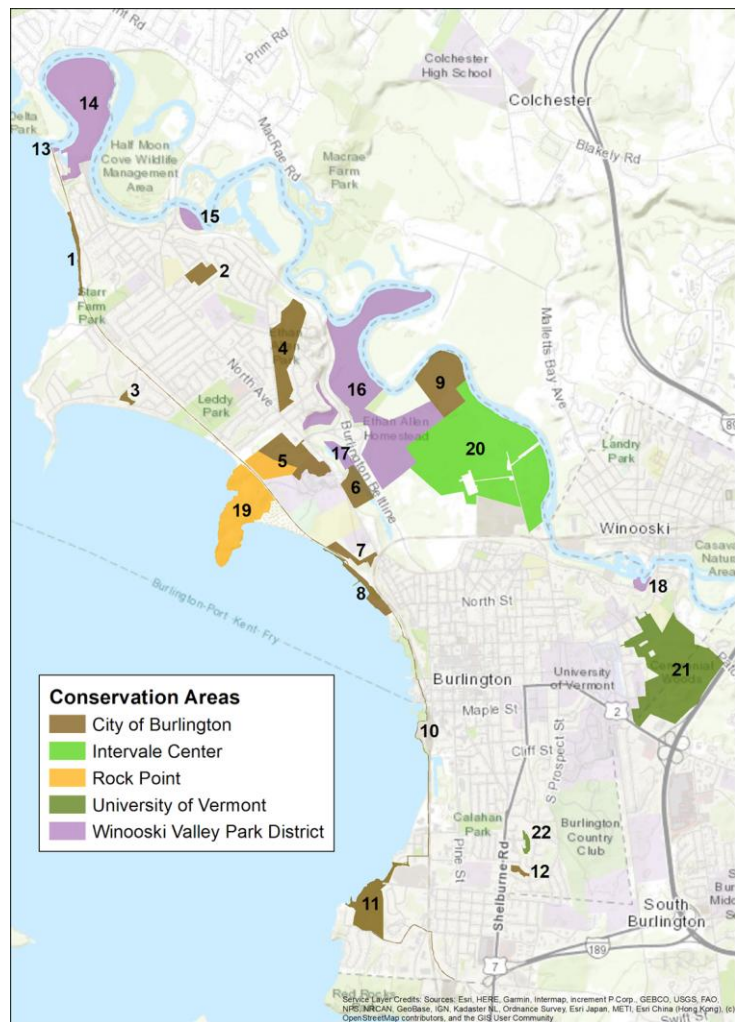


+



=









# NET ZERO ENERGY

BURLINGTON VERMONT



BURLINGTON'S NET ZERO ENERGY GOAL IS  
TO REDUCE AND EVENTUALLY ELIMINATE FOSSIL FUEL USAGE IN HEATING AND GROUND TRANSPORTATION.



# NATURE-BASED CLIMATE SOLUTIONS

An Addendum to the Burlington Open  
Space Protection Plan

February 2022



# Burlington's NBCS Plan

## Six Focus Areas

Water and Wetlands

Lawns, Fields, and Small Open Spaces

Agriculture and Community Gardens

Green Infrastructure

Urban Forests and Tree Canopy

Equity, Inclusion and Relationships

















# Mission

## ***Nature-Based Climate Solutions (NBCS) Programming***

Directly engage students in the creation and exploration of natural areas on their school campus and provide school communities with the agency to generate real climate action, while meeting the requirements of the BSD strategic plan and the City's NBCS Addendum.



# Overview: NBCS Programming with BSD

- Active, continuous programming with:
  - **Champlain Elementary**
  - **CP Smith Elementary**
  - **JJ Flynn Elementary**
  - **Sustainability Academy**
  - **BHS City Lake Semester**
- Approximately 25,000 sq ft of newly established native pocket forest on school campuses
- Planted ~1500 new plants of 36 native species onto the City's landscape



Sustainability Academy



# Plant Wildlife Corridors & Pocket Forests



Champlain Elementary



# Unique Site Conditions, Flexible Programming





# Unique Site Conditions, Flexible Programming



Comptonia

Antennaria

Fragaria

Carex

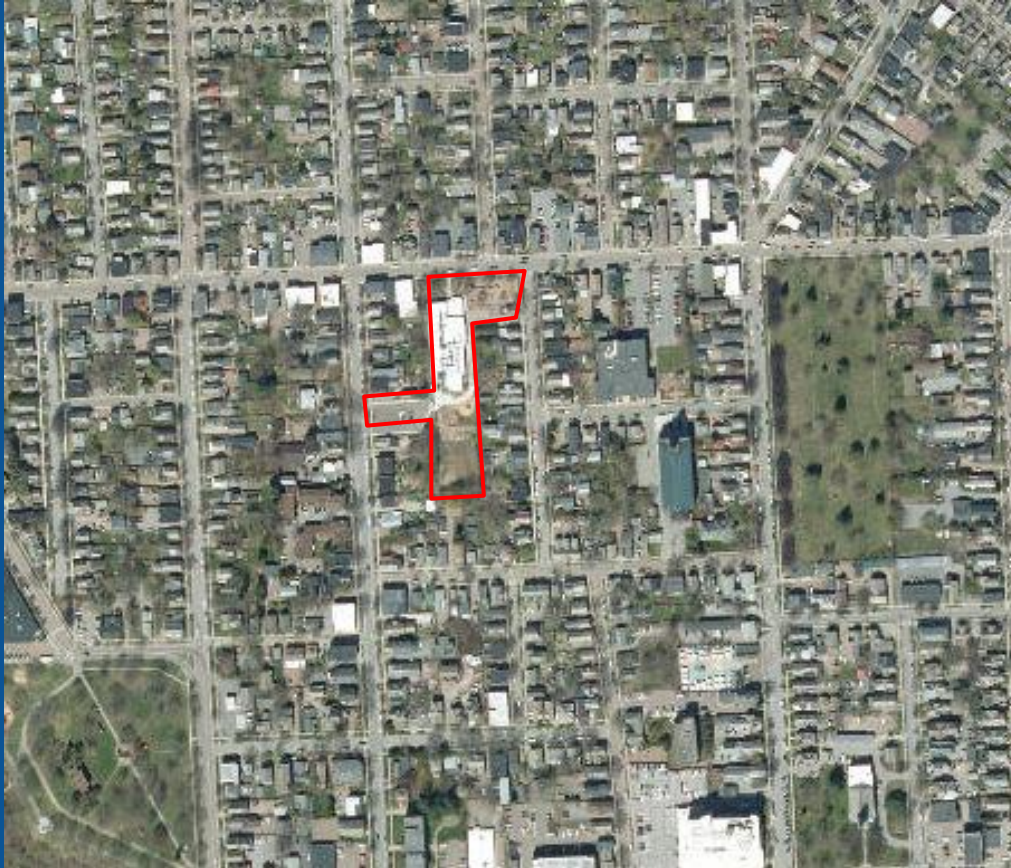
Danthonia

Achillea

Quercus



# Unique Site Conditions, Flexible Programming



Sustainability  
Academy



# Plant Wildlife Corridors & Pocket Forests



JJ Flynn



# Create & Manage Stick Nurseries





# Sow & Grow Native Seeds





# Planting Projects in City Natural Areas & Schools



Champlain Elementary + Burlington High School



# Additional Programming



Pollinator & Insect Explorations  
Phenology & Community Science  
Wildlife Camera Review  
Forest Stewardship  
Invasive Species Removal  
City Open Space Discussion  
Bird Migration Game




# Logistics

## Campus Improvements:


- Identify Point Person - Administrator, Teacher, Committee
- Discuss & get approval from Property Services & Admin

## Program Sign Ups:

- Google Docs



BURLINGTON  
PARKS  
RECREATION  
WATERFRONT



JJ FLYNN ELEMENTARY SCHOOL

Sign up to work with BPRW's Nature-Based Climate Solutions Coordinator, Diane Hannigan, and Burlington Wildways Programs Coordinator, Braden DeForge!

- Meet next to the Pocket Forest at your assigned time.
- Pick how long you would like to work within the window of time you selected based on your grade level. Here are basic time suggestions for this activity:
  - PreK, K, and 1st: 20-30 minutes
  - 2nd & 3rd: 30-45 minutes
  - 4th & 5th: 30-45 minutes

**TOPIC: Tree Planting in the Pocket Forest**  
Students will work together in teams to plant trees or shrubs in the Pocket Forest. We will introduce the concept of the Pocket Forest and discuss how trees provide habitat for various animals. We will review parts of a plant, tool safety, and learn how to properly plant a tree.  
**Grade levels: K - 2nd**

Date	Time Window	Time Requested	Classroom Sign-up	Grade Level	# of students
EXAMPLE	9:00-10:00	9:05 - 9:35	Asaro	5th Grade	23
Friday 5/23	9:15 - 10:00	9:15-10:00	Bloomberg	2nd	13
	10:00 - 10:45	10:00-10:30	Brooks	1st	16
	11:00 - 11:45	11- 11:45	Landry	4th	
	12:00 - 12:45				
Tuesday 5/27	9:00 - 9:45				
	10:00 - 10:45	10:00 - 10:45	Hodgson	1st	16
	10:50 - 11:30				



# Challenges



# Challenges

- Communication between institutions
- Funding



Lake Champlain  
Basin Program



Vermont Urban & Community  
Forestry Program





“This is just fun.”



# Questions, thoughts, or ideas?



Zoe Richards, Burlington Wildways Director:  
[zoe@burlingtonwildways.org](mailto:zoe@burlingtonwildways.org)

Diane Hannigan, NBS Field Coordinator:  
[dhannigan@burlingtonvt.gov](mailto:dhannigan@burlingtonvt.gov)



