

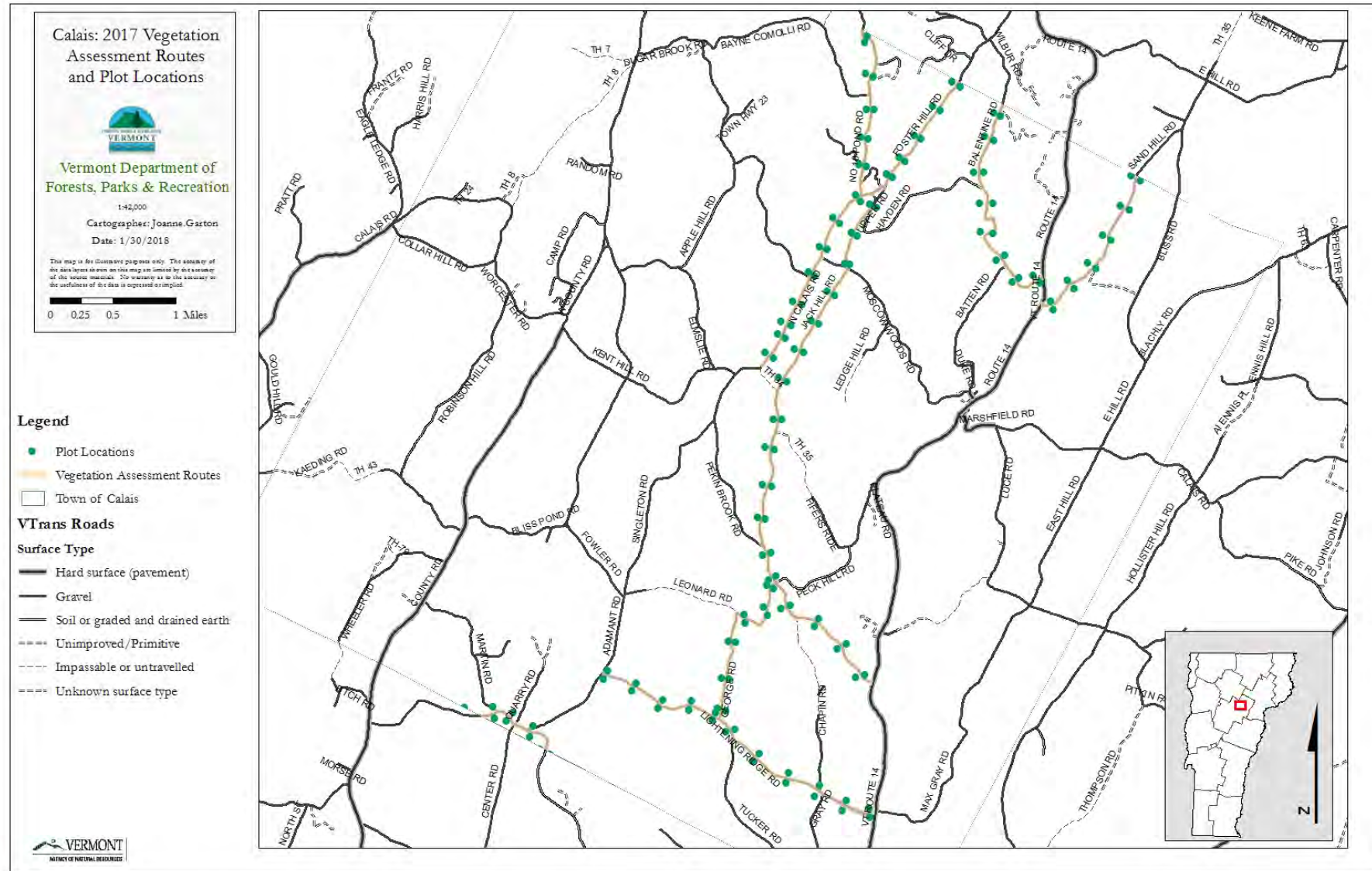


Resilient Right-of-Ways

Calais Rural Road Vegetation Assessment Results
- DRAFT

February 2, 2018

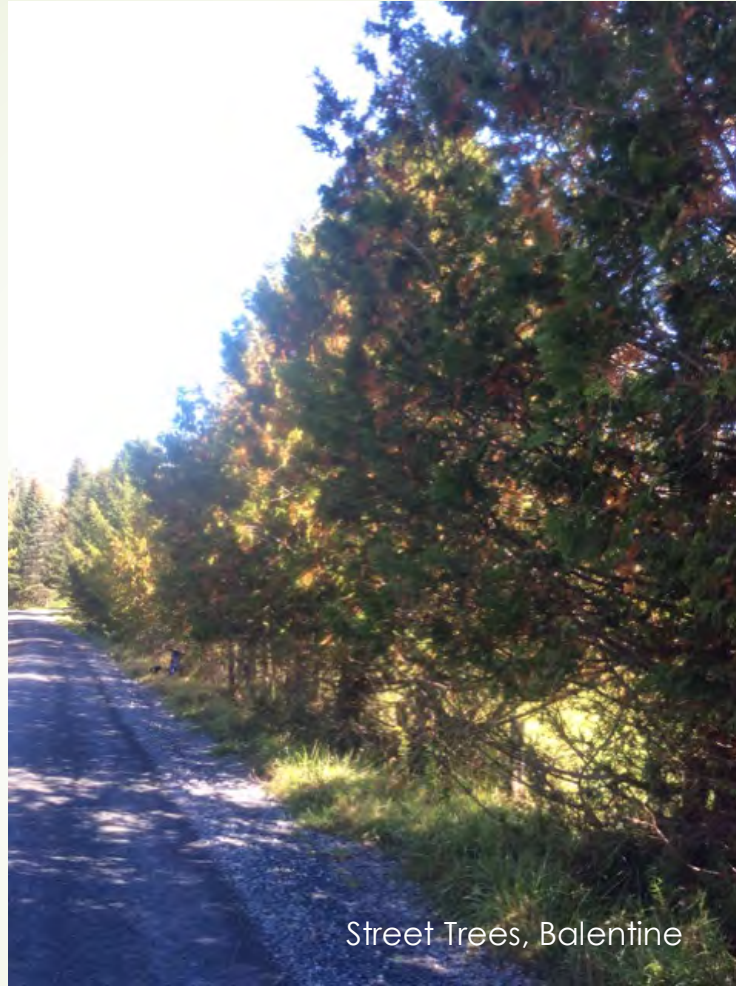
Vegetation Assessment Routes – 2017



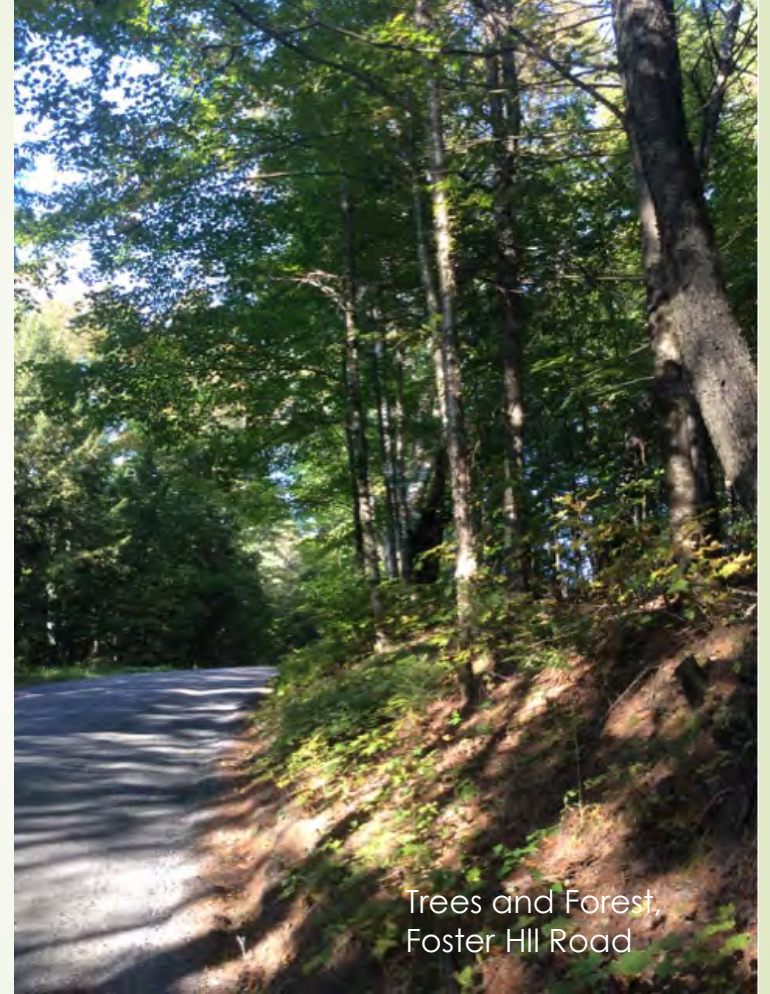
Right-of-Way Community Types



Wet Area, Balentine Road



Street Trees, Balentine



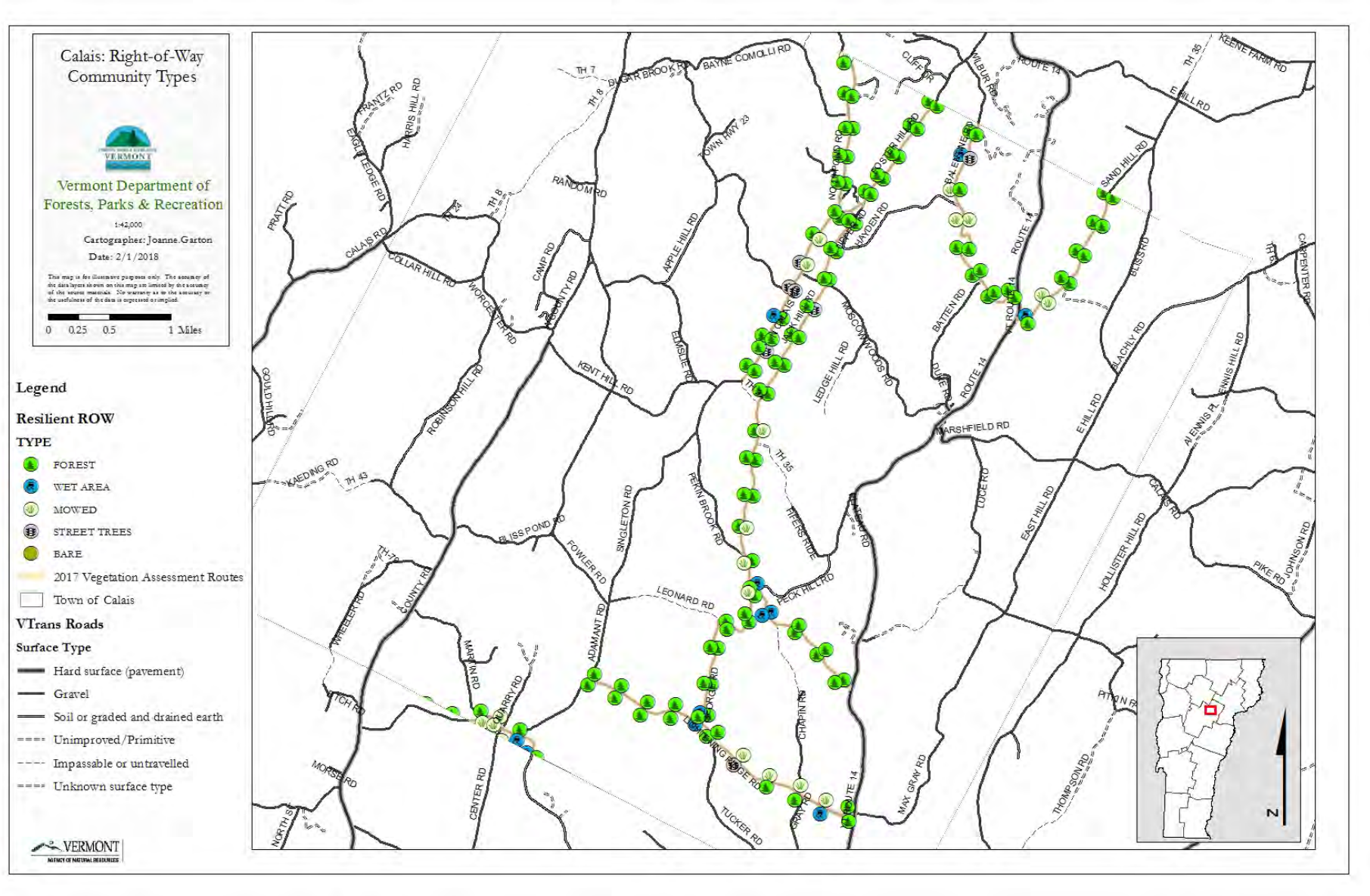
Trees and Forest,
Foster Hill Road



Seasonally mowed,
Pekin Brook Road

Historic Tree, Gould Hill

Right-of-Way Ecology Community Type



Overhead Utilities affecting ROW



Utility, North Haggett Road



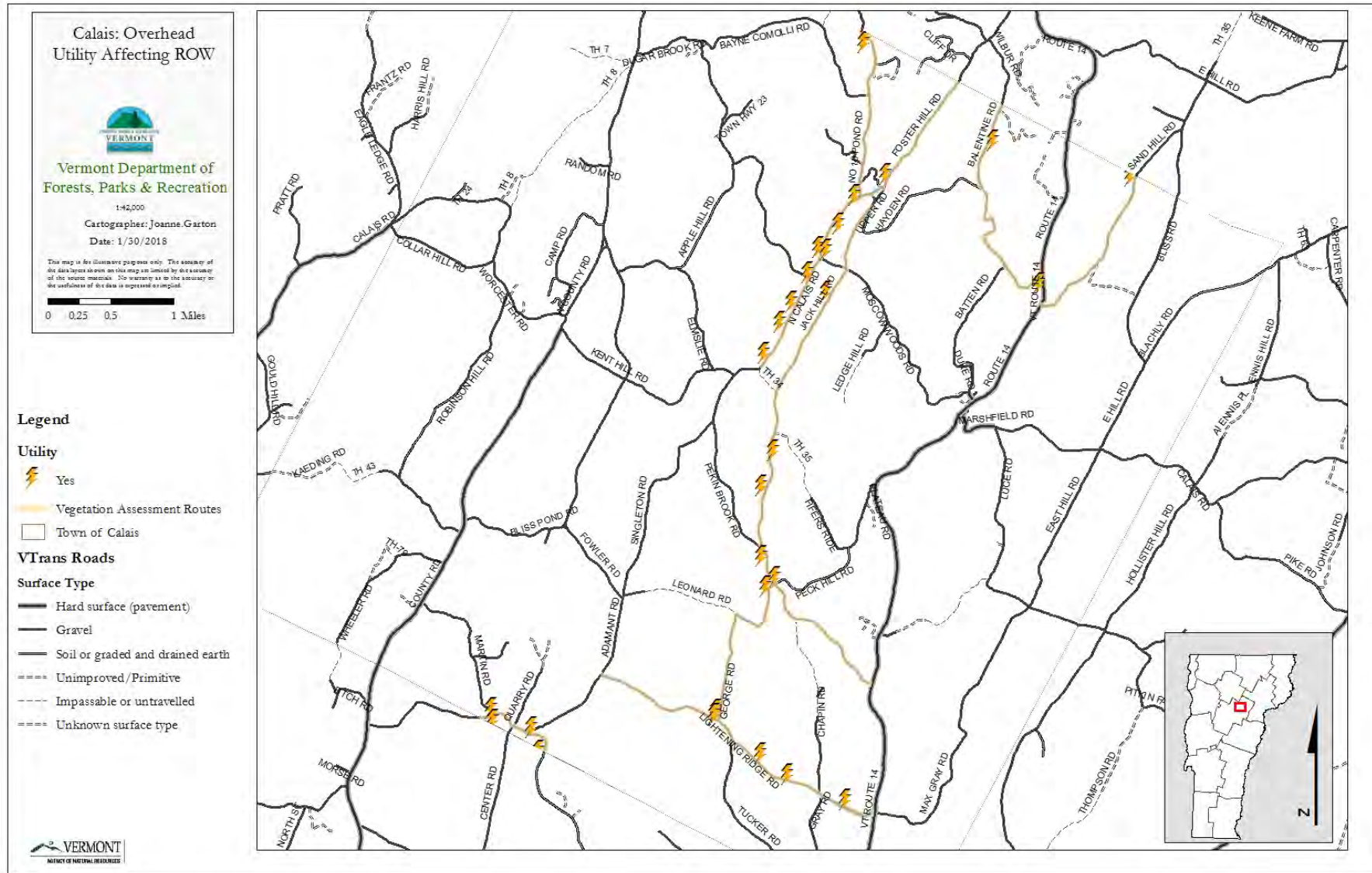
Utility, Balentine Road



Utility, George Road

Historic Tree, Gould Hill

Overhead Utility affecting ROW



Mechanical Damage



Root damage,
George Road



Tree Damage,
Balentine Road



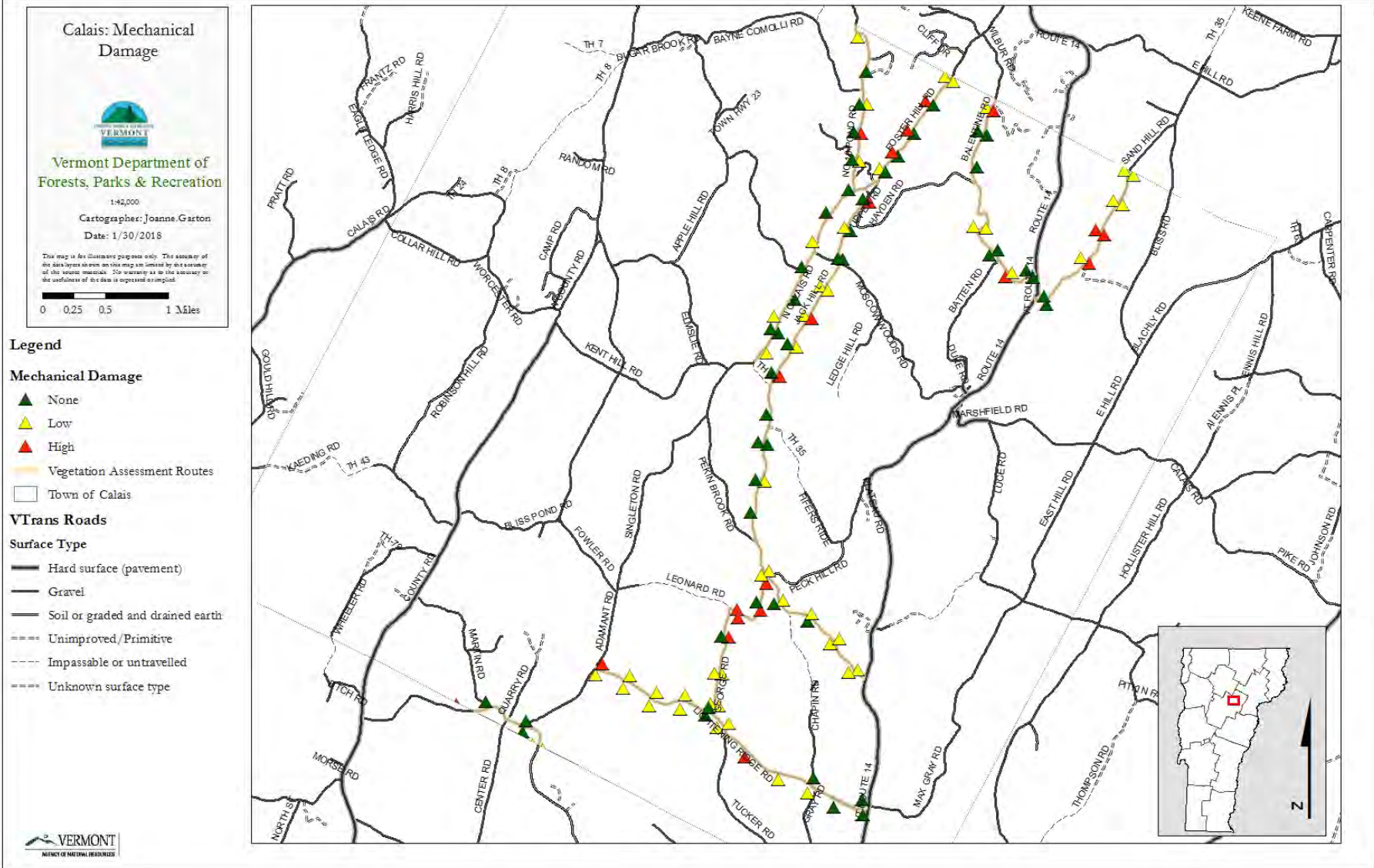
Tree Damage,
Lightening Ridge Road



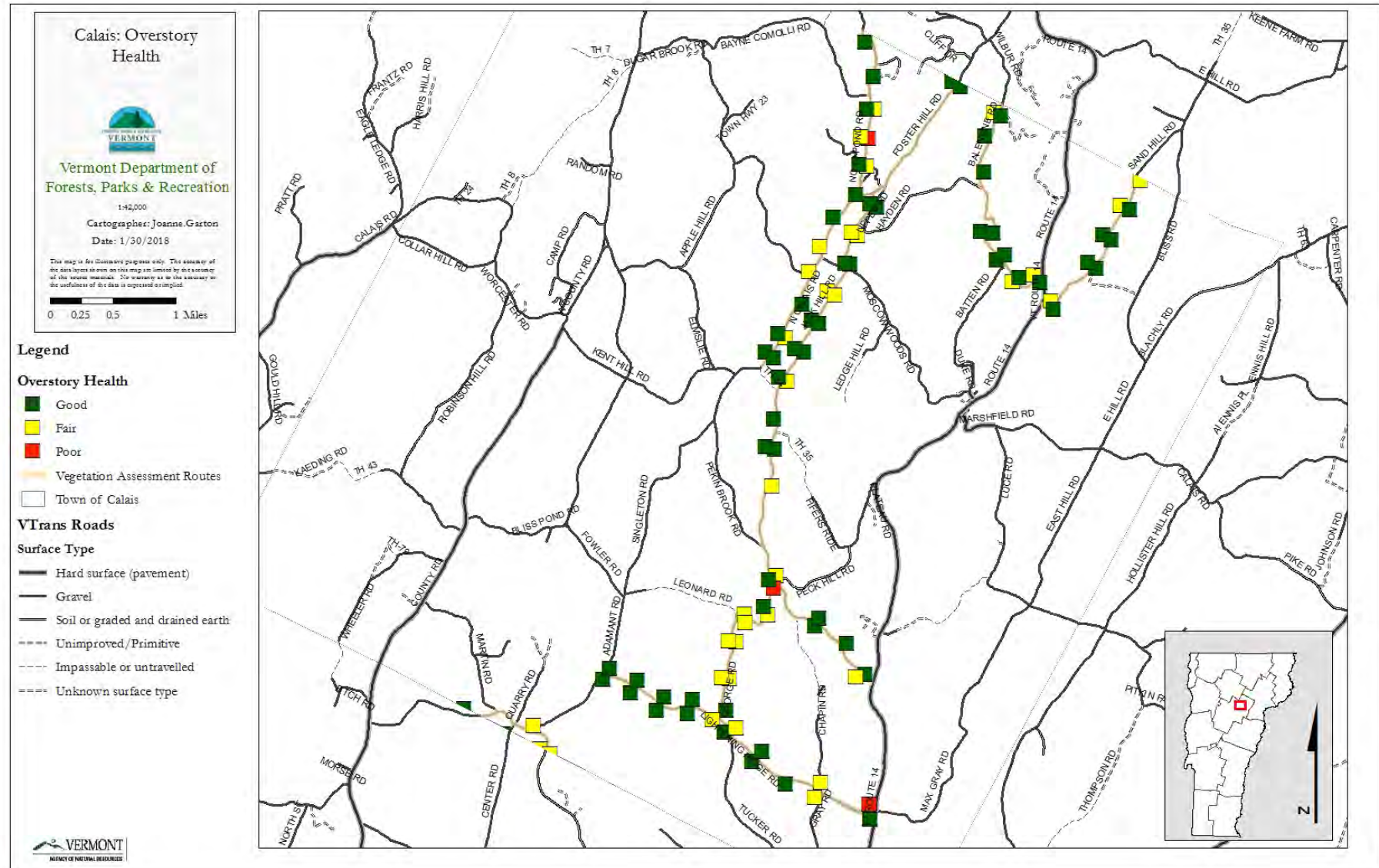
Root damage,
Jack Hill Road

Historic Tree, Gould Hill

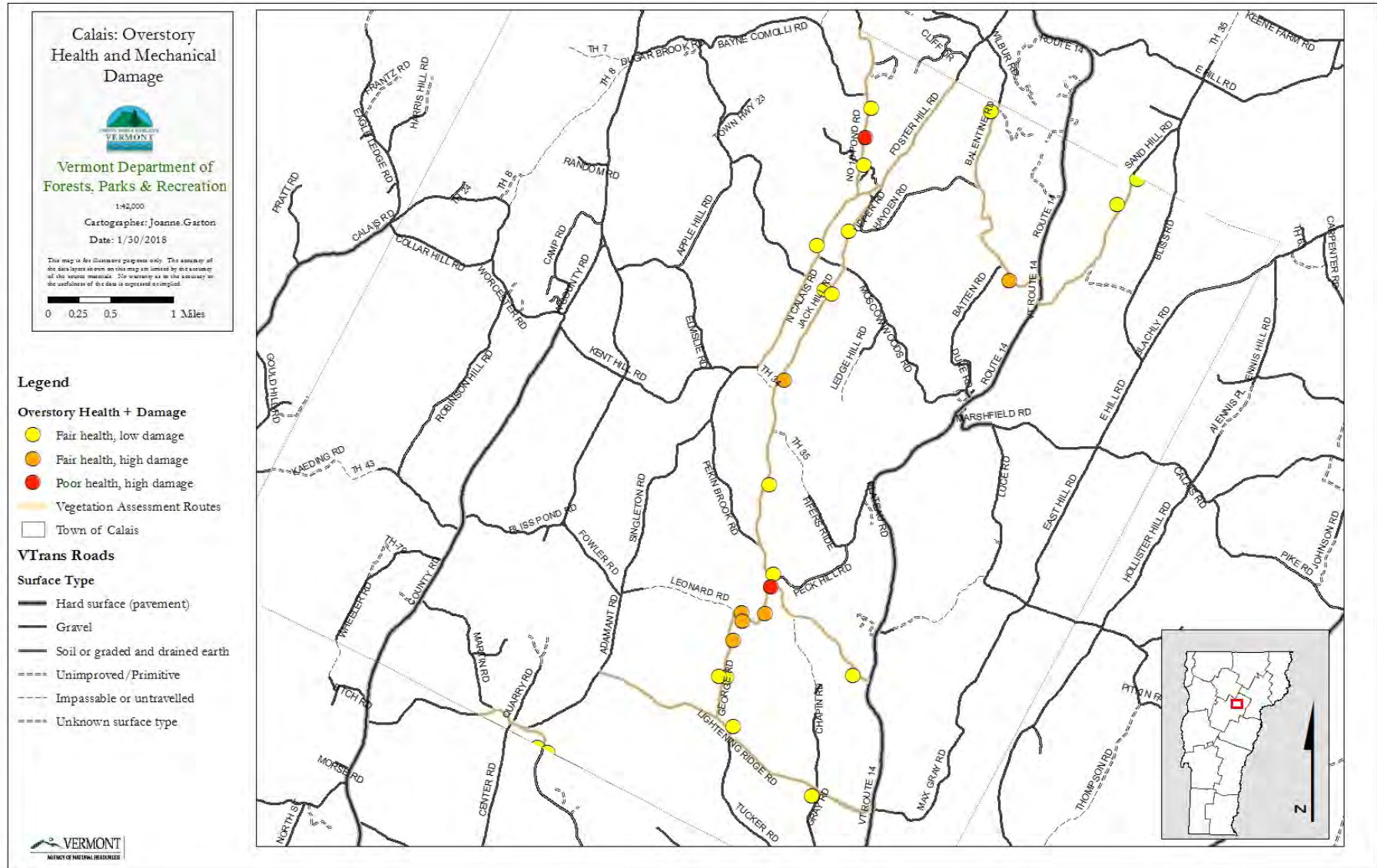
Mechanical Damage



Overstory Health



Overstory Health and Mechanical Damage



Hedgerows



Hedgerow, Lightning Ridge Road



Hedgerow, Ballantine Road



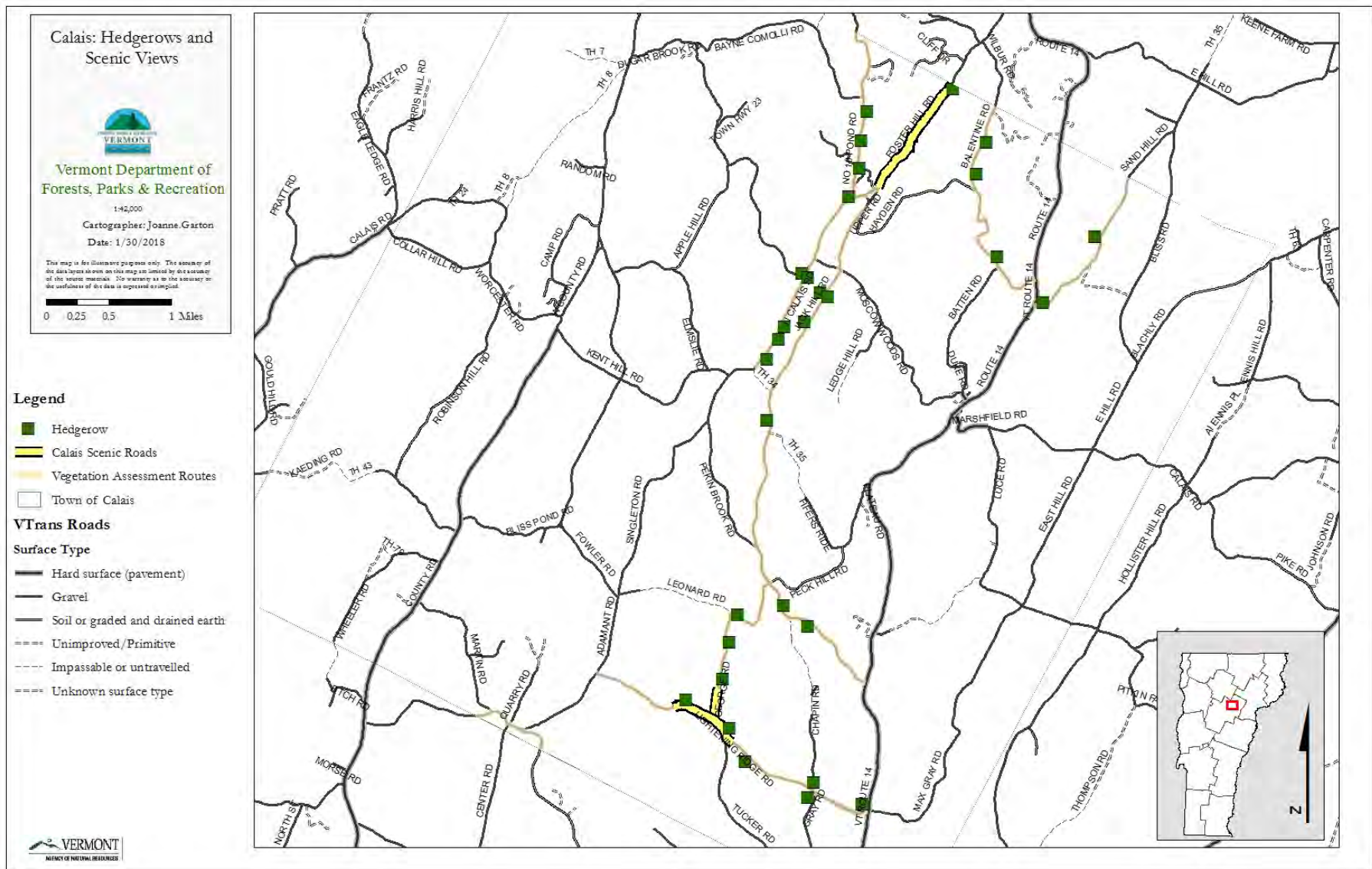
Hedgerow of edge species, North Calais Road



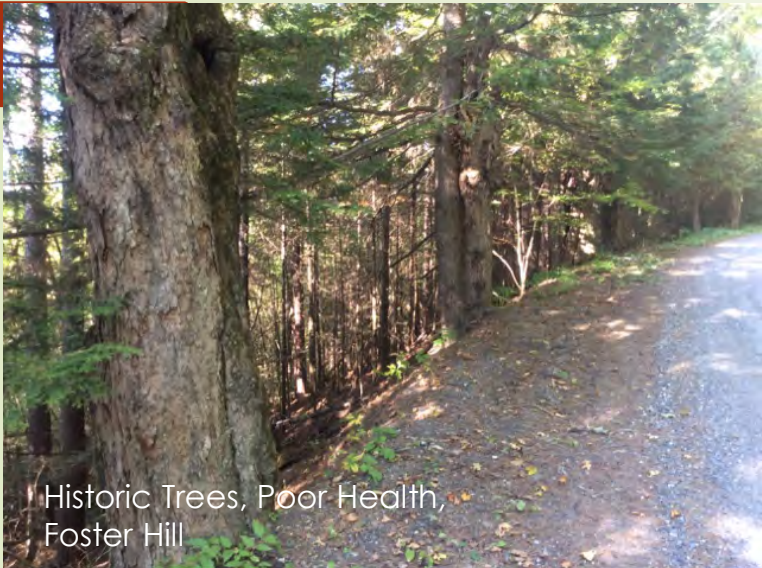
Hedgerow, Foster Hill Road

Historic Tree, Gould Hill

Hedgerows and Scenic Views



Historic Trees



Historic Trees, Poor Health,
Foster Hill



Historic Trees, Poor Health,
Foster Hill



Historic Tree and Road
Markers, Sand Hill Road



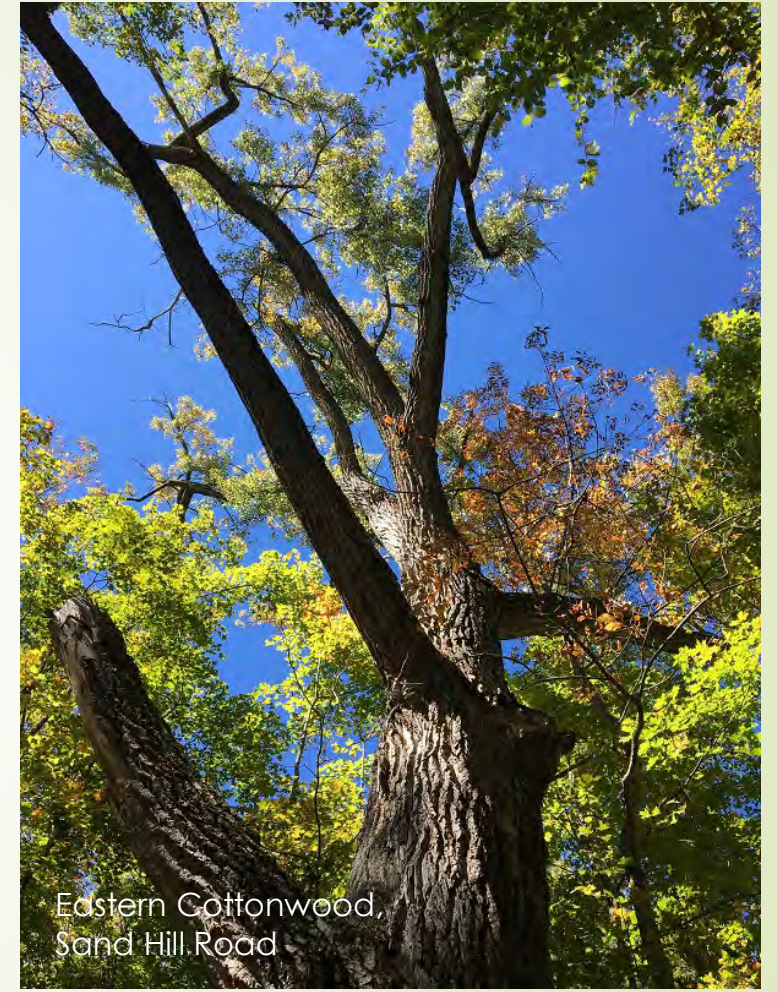
Historic Trees, Fair Health,
Jack Hill Road

Historic Tree, Gould Hill

Big Trees



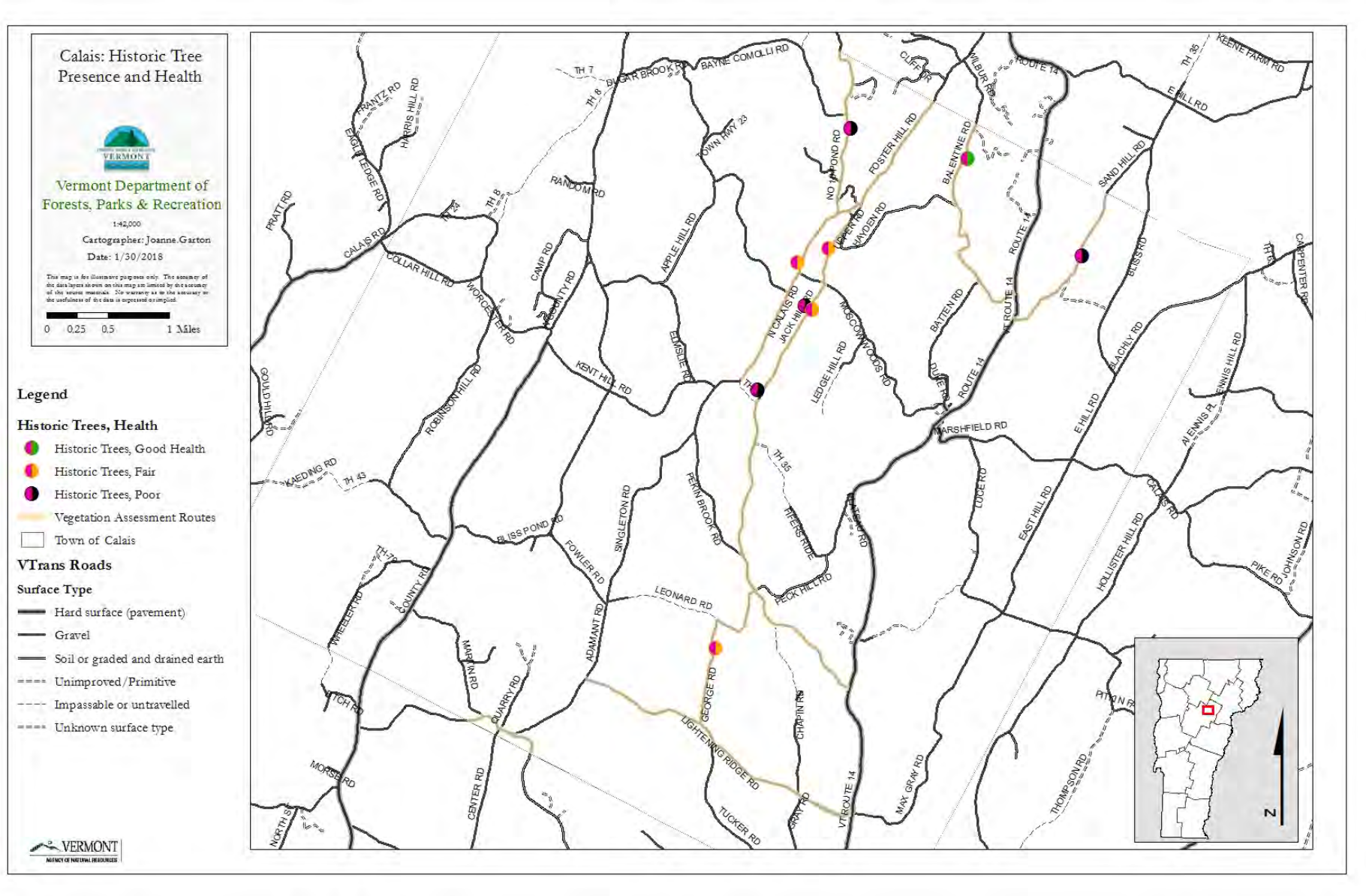
Eastern Cottonwood,
Sand Hill Road



Eastern Cottonwood,
Sand Hill Road

Historic Tree, Gould Hill

Historic Tree Presence and Health



Invasive Plant Species



Japanese Knotweed, Pekin Brook Road near George Road



Buckthorn, Jack Hill Road



Wild Chervil (Cow Parsley), Lightening Ridge Road



Honeysuckle, Pekin Brook Road

Opportunities for Thinning to Improve Canopy Health



Dense roadside trees, Jack Hill



Treescaping opportunity, Balentine Road



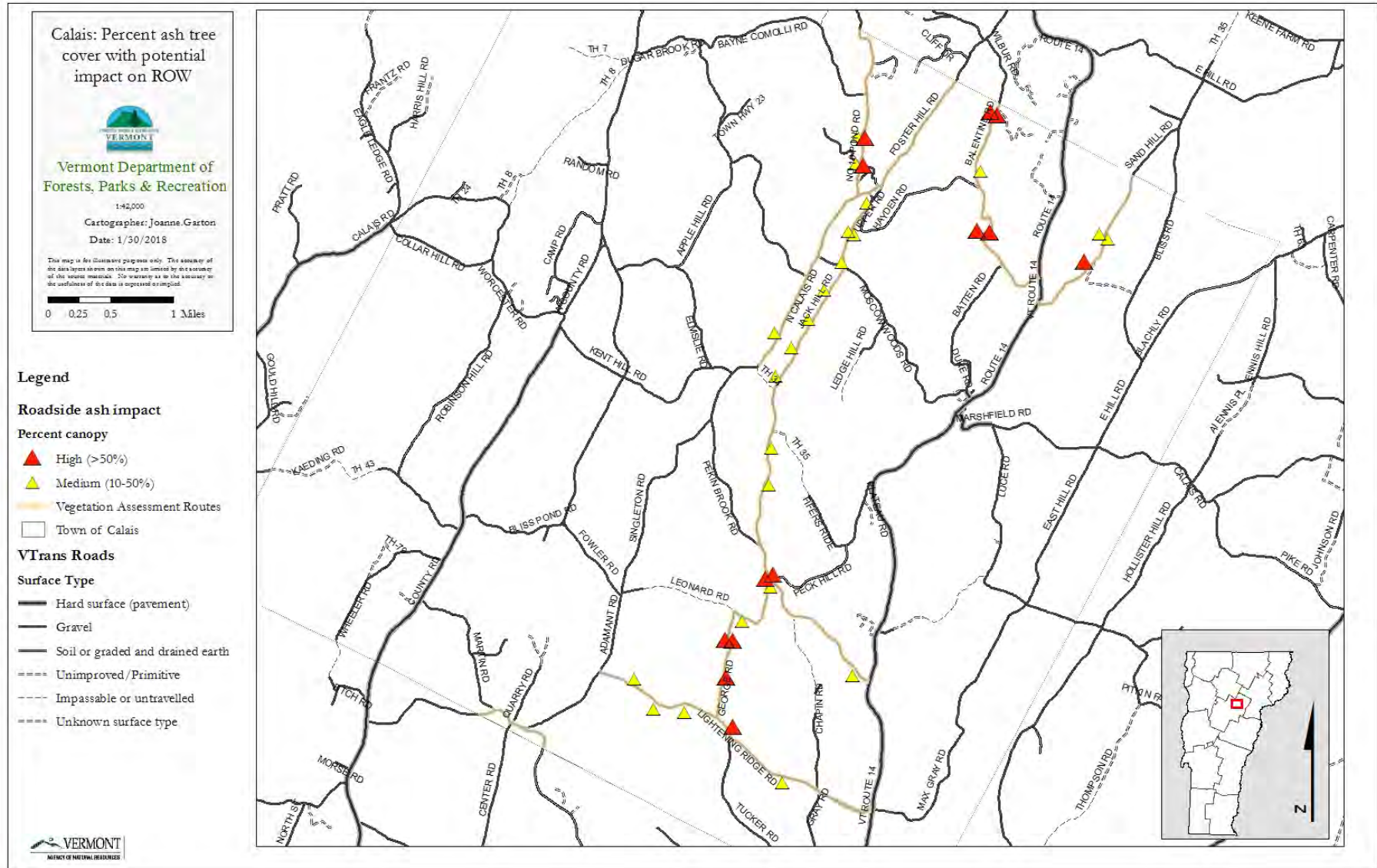
Treescaping opportunity, George Road



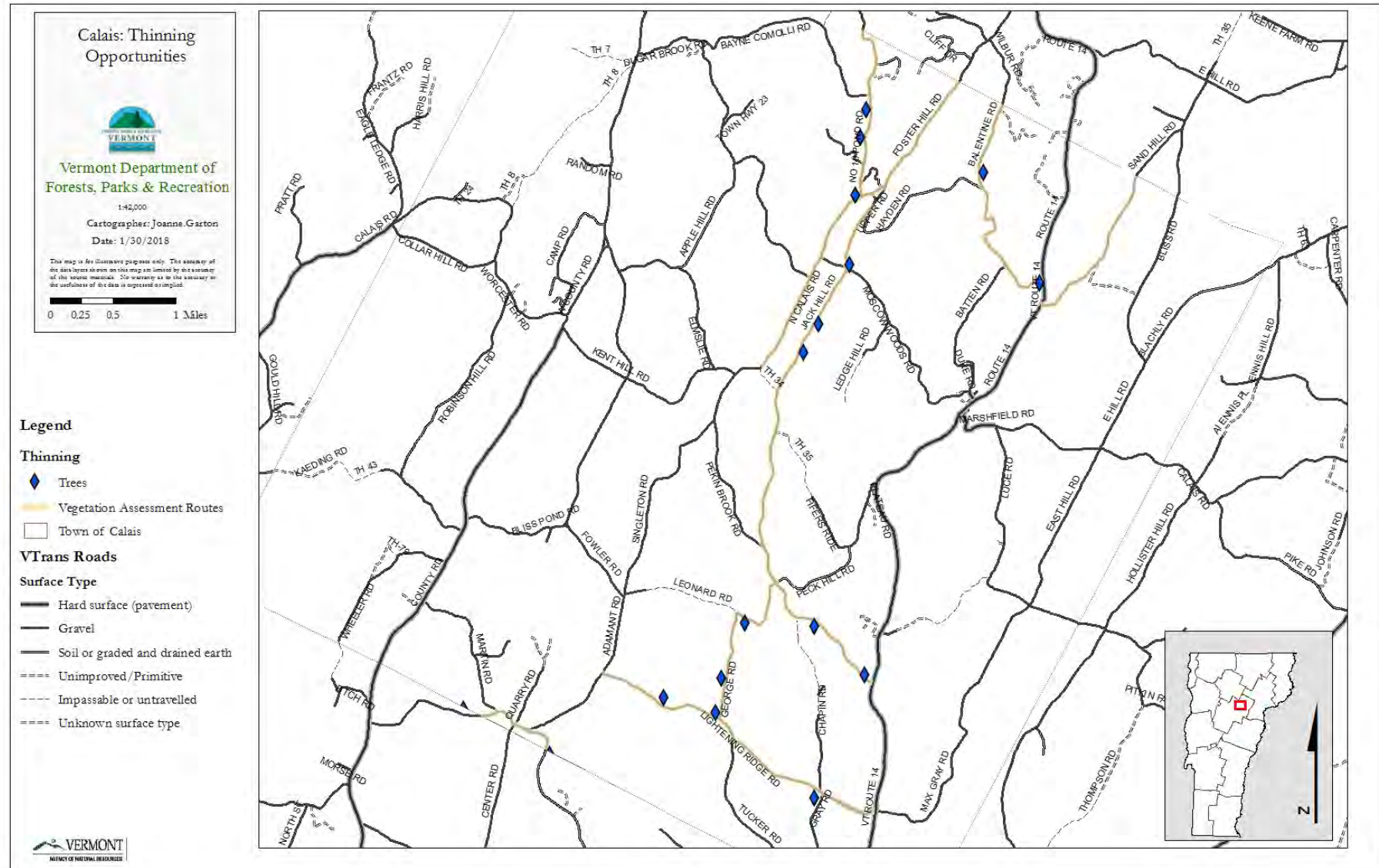
Dense roadside trees, Lightning Ridge

Historic Tree, Gould Hill

Ash Tree Canopy Cover affecting ROW



Opportunities for Thinning to Improve Canopy Health



Opportunities to Plant or Promote Regeneration



Planting Opportunity, No. 10 Pond Road



Regeneration opportunity,
North Calais Road



Regeneration opportunity, Pekin Brook



Planting or Regeneration Opportunity,
Balentine Road

Historic Tree, Gould Hill

Preserve vegetation to preserve roadside slope



Historic Tree, Gould Hill

Proposed Pilot Project – West end of Lightning Ridge Road

- ~1/2 mile portion along highly trafficked and wide
- Mature short-lived species in the ROW and on private land
- Opportunity for planting or regeneration to demarcate the road
- No cut zones to preserve roadside slope
- Mechanical damage to trees
- Wild chervil (and other invasives?)

